

<p style="text-align: center;">TECHNICAL RIDER Re INCARNATION – QUDUS ONIKEKU 29 Janvier 2021</p>

Duration of the performance : 1h30 without interval

Road crew - 15 people : 10 dancers, 1 musician, 1 choreographer, 1 tour manager, 1 general technical manager, 1 lightg designer.

Contact :

Technical Manager

Isaac Lartey : +33 (0)6 61 83 59 38 / d1autremonde@gmail.com

Matthew Yussuf (Lights designer) : matolight@gmail.com

Producer

Hajarat ALLI : info@qdancecenter.com

STAGE

Minimum Stage :

- Proscenium opening : 10 meters (ideal 12 meters).
- Wall to wall opening : at least 12 meters (ideal 16 meters)
- Stage depth : 8 to 12 meters (ideal 10 meters).
- Height : at least 6 meters.
- Black dance floor
- Black back drop

Our needs:

-2 Stage platform (2mX1) dressed in black. For the musician and his instruments
(position on stage to be confirmed with the technical manager)

-2ft by 2ft BOX STAND for the musician's laptop

-Bucket (Approx 10L)

-lashlines (dropped off) to hang 10 costumes against the back drop (cf_PHOTOS).

LIGHTNING

A pre-hanging is necessary.

We will send you a specific light plot on receipt of your venue's technical specifications.

POSSIBLE ADAPTATIONS for less equipped venues.

Special Effects: smoke machine

SPOTS: 87

17 - PC 1K Juliat

19 - PC 2K Juliat

10 - Source 4 zoom 25/50° 750 W ETC

20 - 614 SX 1000W Juliat

4 - 613 SX 1000W Juliat

16 - PAR Rush 2 RGBW Zoom Martin

1 - Cycloid ACP1001 1000W ADB

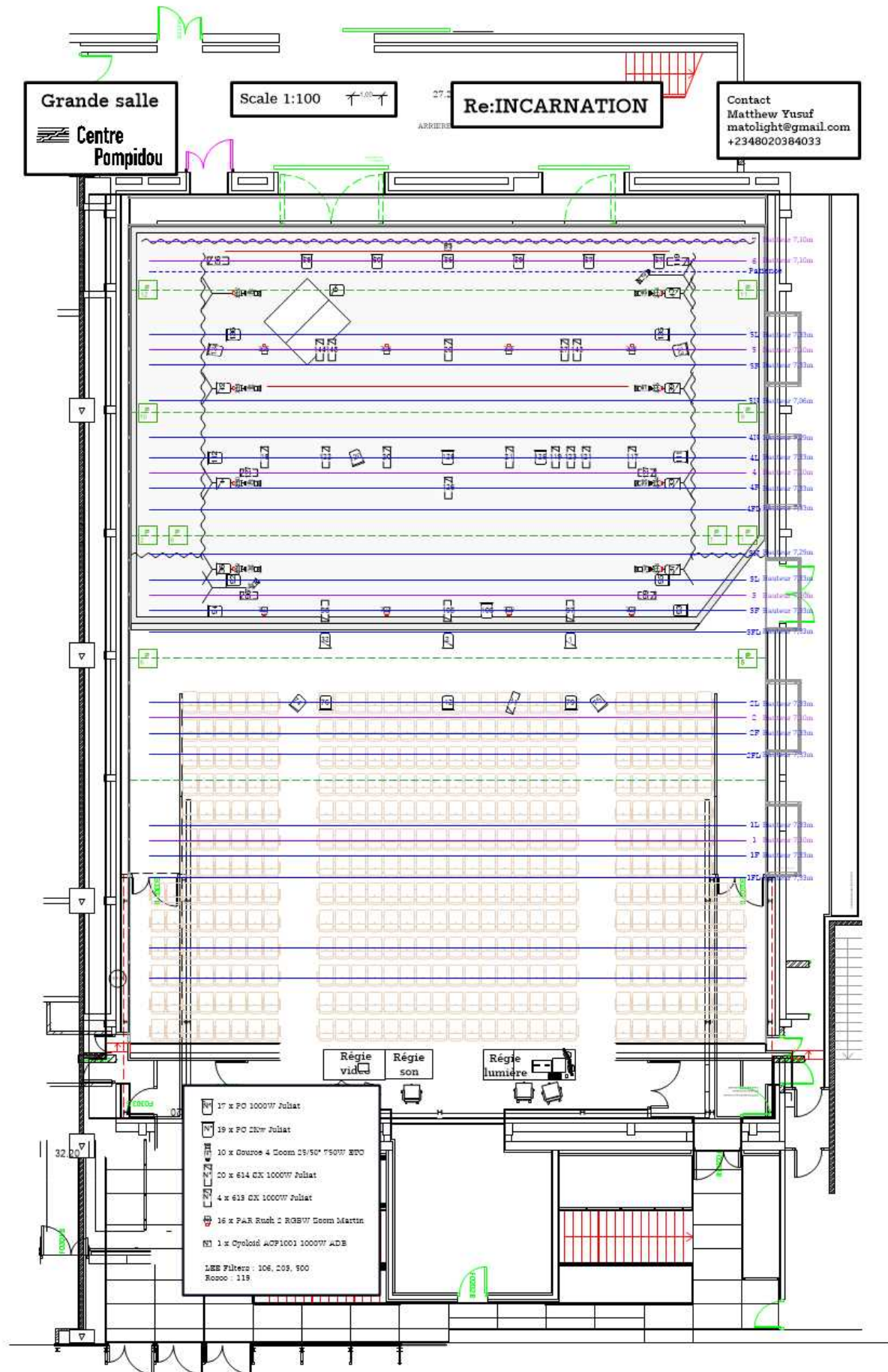
FILTERS

LEE FILTER : 026– 203 – 500 ROSCOE : 119

 **Centre
Pompidou**

27.1

Contact
Matthew Yusuf
matolight@gmail.com
+2348020384033



SOUND

Music is Live on stage.

The musician is installed on a 2 Sq.m. riser , at the right-stage, at the back.

A 6 CHANNEL MIXER ON STAGE is controlled by the musician

(A loop machine, a laptop and an ipad will be used as source for the mixer)

Provided by the venue

- 1 6 CHANNEL Mixer
- 8 D.I.
- 5 KM184(Static Cardio)
- 1 SM57
- 6 Jack Cables_3m
- 1 Sound recorder
- Sound Technicien needed

3 static microphones (1+couple) should come and go from the flies with a pulley during the show

Speakers:

Standard theatre stereo sound system.

1 pair of monitoring speakers(type12XT) for the musician.

3 pairs of MID-RANGE monitoring speakers (type12XT) on stands on each side of stage back and middle

2 pairs of SUB on stage ,

.

OUTPUTS

1_Mix L	5_Mon 3	9_Mon musician L	13__SUB Plateau.
2_Mix R	6_Mon 4	10_Mon musician R	14__SUB Plateau.
3_Mon 1	7_Mon 5	11_SUB Plateau.	
4_Mon 2	8_Mon 6	12_SUB Plateau.	

INPUT FOH

1_ MIX L	5_ Coupled Static R (typeKM184)
2_ MIX R	6_ Coupled Static L (typeKM184)
3_AMP (typeSM57)	7_Static front-stage R (typeKM184)
4_ Single drop-off Static (typeKM184)	8_Static Front-Stage L (typeKM184)

INPUT 6 charnells mixer

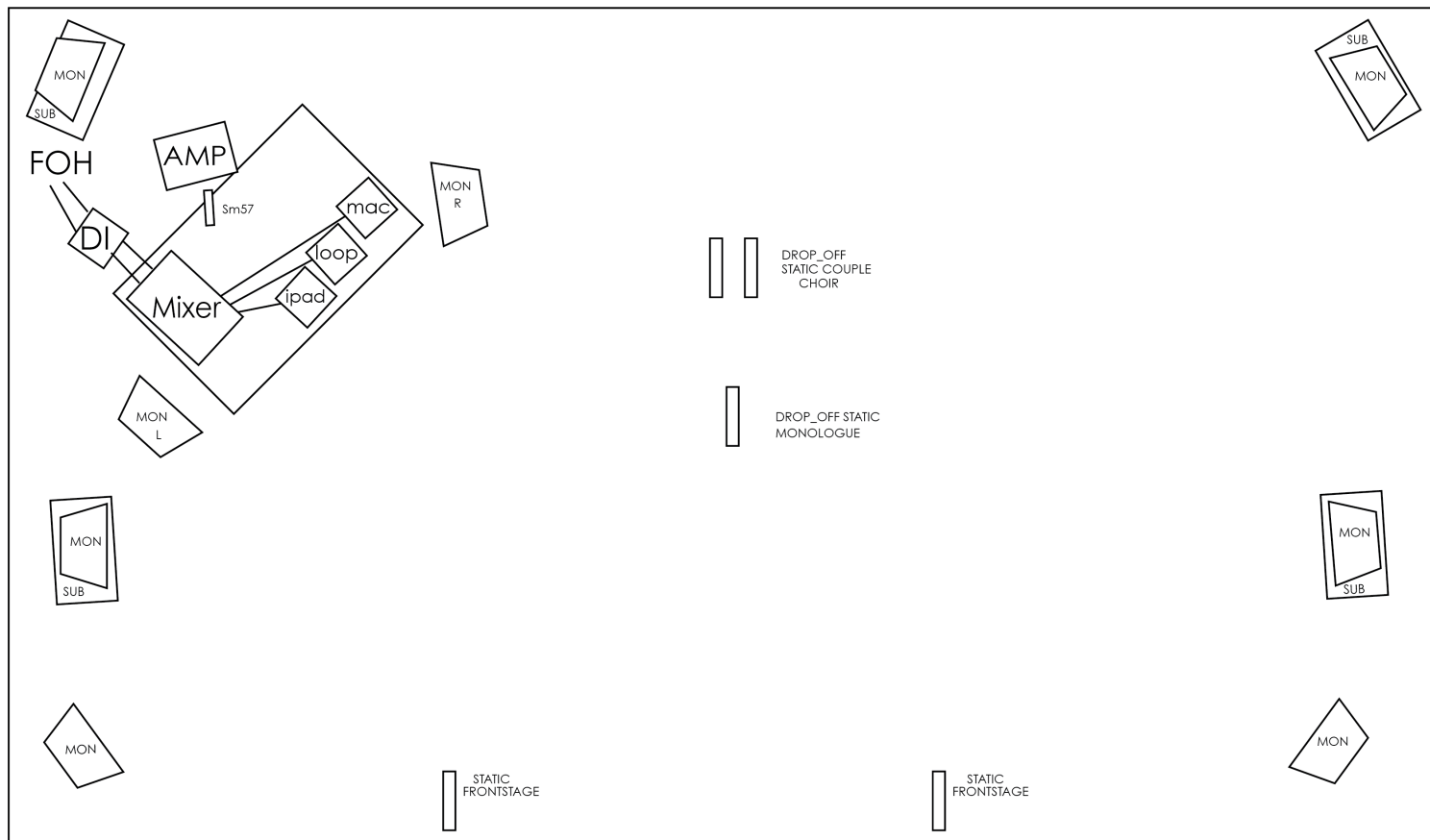
1. LAPTOP D.I.	3. ipad D.I.	5. LOOP D.I.
2.	4.	6.

Backline :

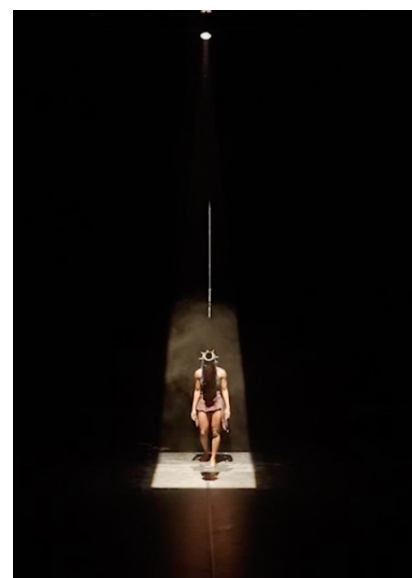
LEAD GUITAR AMPLIFIER (FENDER ,VOX)

LEAD GUITAR (GIBSON EPIPHONE)

GUITAR STAND



□



VIDEO

Use of videoprojection for texts and subtitles, on the Black back drop

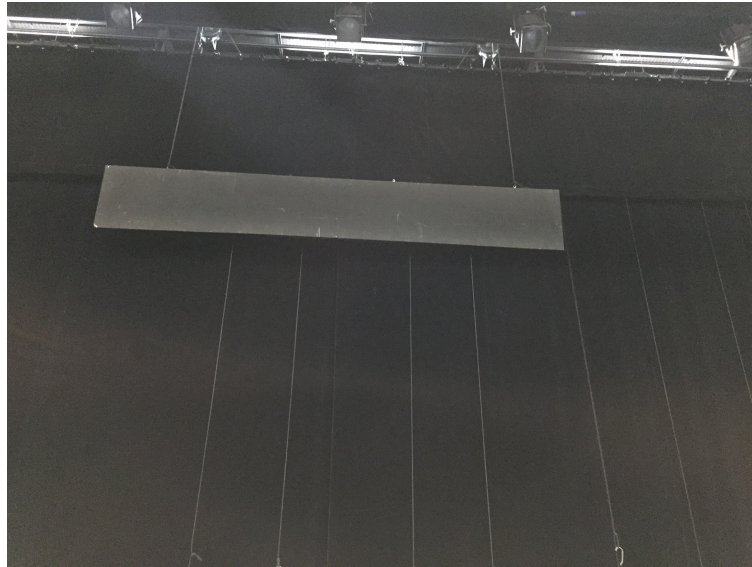
Our needs:

1 vidéoprojecteur (minimum 6 000 lumens).

1 rectangular black panel on which subtitles will be projected (approx.

2 m 50 x 0,80). The pannes should disappear on the flies with a pulley, during the show

1 laptop for video diffusion



COSTUMES

The Company arrives with 40 costumes into 4 big travel bags.

We need a wardrobe keeper to review and prepare the costumes before the show

Washing and drying right after the show or at the arrival, according to the tour schedule.

Some adjustments and fixing can be needed.

Dressing room

Dressing room + make-up mirrors and showers for 11 individual.

10 bath towels, soap and SPONGES.

1 office with internet access.

Catering before each performance.

Small bottles of water on stage and in the dressing room.

10 large bottles of water on stage during the show.

Tea, coffee, juices, Bananas, dry fruits and seeds.

SCHEDULE

Pré hanging of lights and Setup off sound Will be necessary

- Before arrival : Pré-hanging of lights and installation of black dance mat
- Arrival off the team 2 days before the show
- Dancers Will be on stage the day before the Show for technical rehearsal and run- through.

Day before performance

Local Crew	stage	light	sound	others
1st technical call	1 stage Manager 2 stage technician	1 lightning technician	1 sound operator	1 video technician
2nd technical call	1 stage Manager 2 stage technicians	1 lightning technician	1 sound operator	1 wardrobe keeper
3d technical call rehearsal and run-through	1 stage Manager	1 lightning technician	1 sound operator	1 wardrobe keeper

Day of the performance

Local Crew	stage	light	sound	others
1st technical call	1 stage Manager 2 stage technician	1 lightning technician	1 sound operator	
2nd technical call Rehearsal	1 stage Manager	1 lightning technician	1 sound operator	1 dresser
PERFORMANCE	1 stage technician	1 lightning technician	1 Sound operator	1 dresser
striking + 1 h	1 stage technician	1 Lighting technicians 1 Stage Hands		1 dresser



